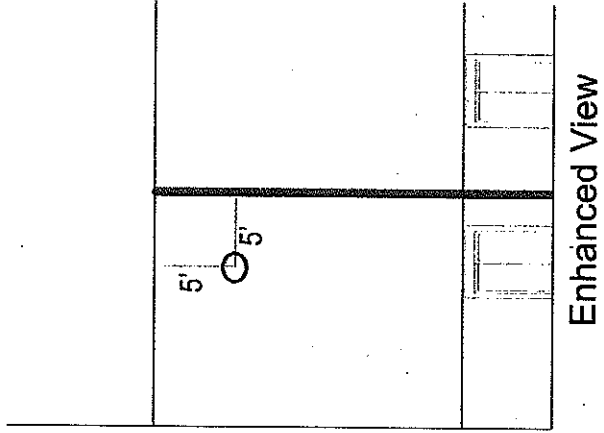
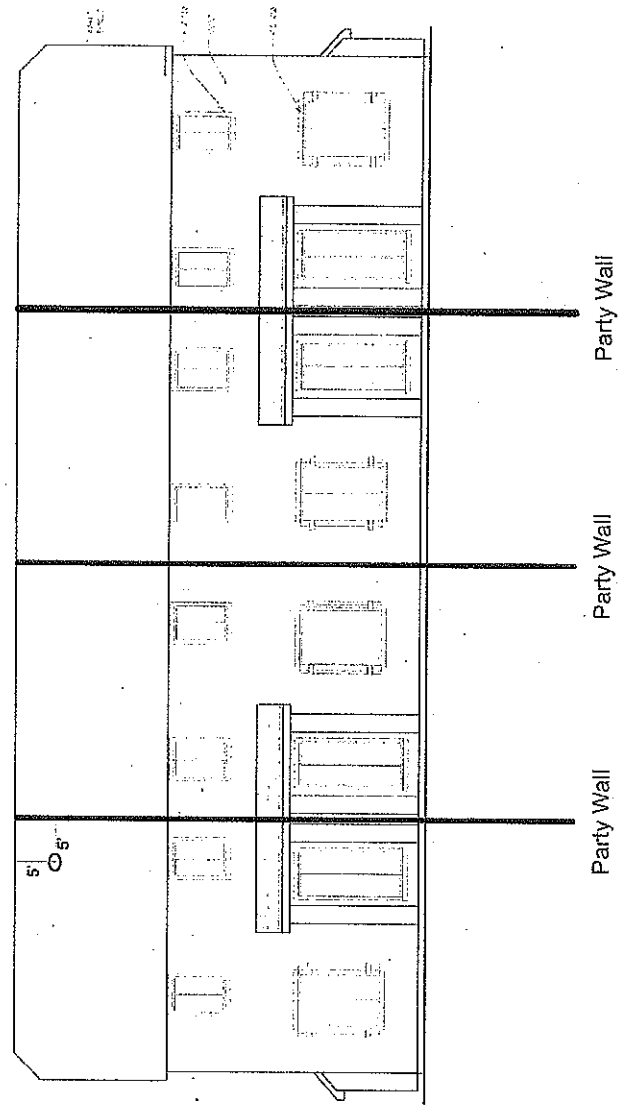


The Cottages at Sycamores HOA

Approved Satellite Placement

LEGEND

- Satellite
- Party Wall
- 5' Distance Marker Line



Satellite placement must be 5' from a party wall and 5' from the peak of the roof and must be placed on the backside of the roof as to not be seen from the front of the home. If you own an end unit, you may not install it 5' from the end wall. It must be measured and installed from the party wall (party wall is that which joins your home with your neighbors home). If you are in an inside unit with two party walls, you may choose which of your party walls to measure from. The builder has installed coax cable in the attic of each townhome near the center of the attic. Any and all damages to the building as a result are sole responsibility of homeowner. Homeowner is also responsible to retrofit any modifications done to the building in a manner approved by the board. Any other location must be approved by the homeowners association prior to installation. Please contact the homeowner's association's representative for further details or questions.